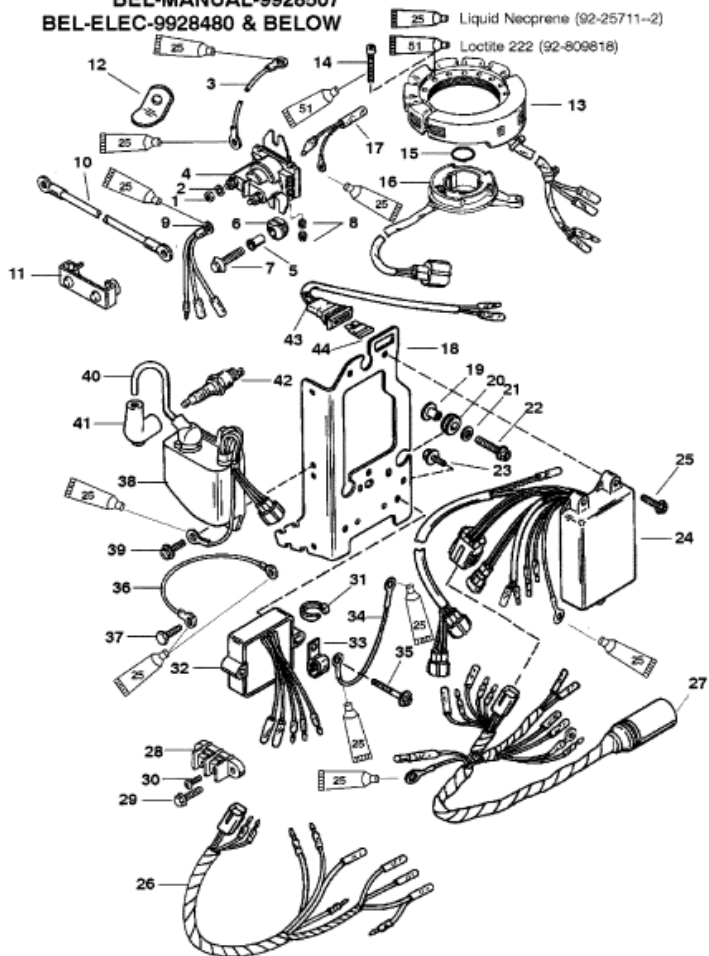


**FOR SERIAL NUMBERS:  
 USA-0G380074  
 BEL-MANUAL-9928507  
 BEL-ELEC-9928480 & BELOW**



**NOTE: APPLY LIQUID NEOPRENE TO ALL RING EYELET WIRING TERMINALS.**

					Parts List			
Ref	Class	Part	Description	Qty	Comment	Footnote		
1	11	64015	NUT (1/4-20)	2				
2	13	26392	LOCKWASHER	2				
3	84	88807A16	CABLE ASSEMBLY (BLACK-4 IN.)	1	ELECTRIC			
4	89	818998A 2	SOLENOID ASSEMBLY	1	ELECTRIC			
5	23	818968	BUSHING	1	ELECTRIC			
6	25	818967	GROMMET	1	ELECTRIC			
7	10	40011129	SCREW (M6 X 25)	2				
8	11	26419	NUT (8-32)	2				
9	84	825004A 1	CABLE (RED)	1	ELECTRIC			
10	84	88439A 4	BATTERY CABLE (NEGATIVE)	1	ELECTRIC			
11	85	97861	INSULATOR	1				
12		827510 1	RETAINER	1				
13	398	832074A 5	STATOR	1	(MANUAL)	4		
14	10	40073 30	SCREW (M5 X 30)	5				
15	25	62457	O RING	1				
16		99021A14	TRIGGER	1				
17	84	11149A14	HARNESS ASSEMBLY	1				
18		830236 1	PLATE-ELECTRICAL	1		4		
19	23	822003	BUSHING-FLANGED	3				
20	25	822002	GROMMET	3				
21	12	40023 16	WASHER	3				
22	10	40011129	SCREW (M6 X 25)	3				
23	10	821291 14	SCREW (M6 X 14)	1				
24		823251A 5	TPM ASSEMBLY	1				
25	10	822393 20	SCREW (M5 X 20)	3				
26	84	824456A 2	HARNESS ASSEMBLY-ENGINE	1	(MANUAL)			
27	84	824477A 4	HARNESS ASSEMBLY-ENGINE	1	(ELECTRIC)	4		
28	86	63813 1	TERMINAL BLOCK	1	MANUAL			
29	10	822393 12	SCREW (M5 X 12)	2	MANUAL			
30	10	62568	SCREW (10-16 X 3/8 IN.)	2	MANUAL			
31	54	816311	STA-STRAP	AR		11		
32		815279 5	VOLTAGE REGULATOR	1	ELECTRIC	4		
33	54	54457	J-CLIP	1	ELECTRIC			
34	84	88807A20	CABLE (BLACK-11 IN.)	1	ELECTRIC			
35	10	821291 35	SCREW (M6 X 35)	2				
36	84	88807A29	CABLE (BLACK-9 IN.)	1				
37	10	812832 1	SCREW (10-16 X 3/5 IN.)	1				
38		827509A 6	CDM ASSEMBLY	2		4		
39	10	821291 14	SCREW (M6 X 14)	4				
40	84	813715A13	HI-TENSION CABLE KIT	2				
41	85	62709A 1	BOOT KIT	2				